

# VANGUARD

## Submittal

Style VGS-P  
Slope Top Enclosures  
Element Ratings

Partially Perforated Enclosure

### Specification

**ENCLOSURE:**

- STYLE : "VGS-P"
- OUTLET: Slope Partially Perforated
- LENGTHS: 2' thru 8' in 6" Increments
- MATERIAL  14 Ga. C.R.S. Std.  
 12 Ga. C.R.S. Opt'l.  
 14 Ga. Stainless Opt'l.
- FINISH:  Baked Primer  
 Factory Baked Powder Opt'l.

- ACCESSORIES:** All overlapping, extend to wall at top. Bottom returns to wall, holes provided for fasteners.
- 14 Ga. Std.
  - 12 Ga. Opt'l.

**ELEMENT:**

- TYPE: Cu/Al (Mechanically Expanded)
- LENGTHS: 2'0" thru 12'6" in 1" Increments.
- 3/4" Cu Tube Available up to 8'0" Max.
- One End Flared, Std.
- See Catalog for Working Pressures.

**ELEMENT:**

- TYPE: Steel (Mechanically Expanded)
- LENGTHS: 2'0" thru 12'6" in 1" Increments.
- NPT Threads Both Ends (standard)
- Beveled Ends for Field Weld
- See Catalog for Working Pressures.

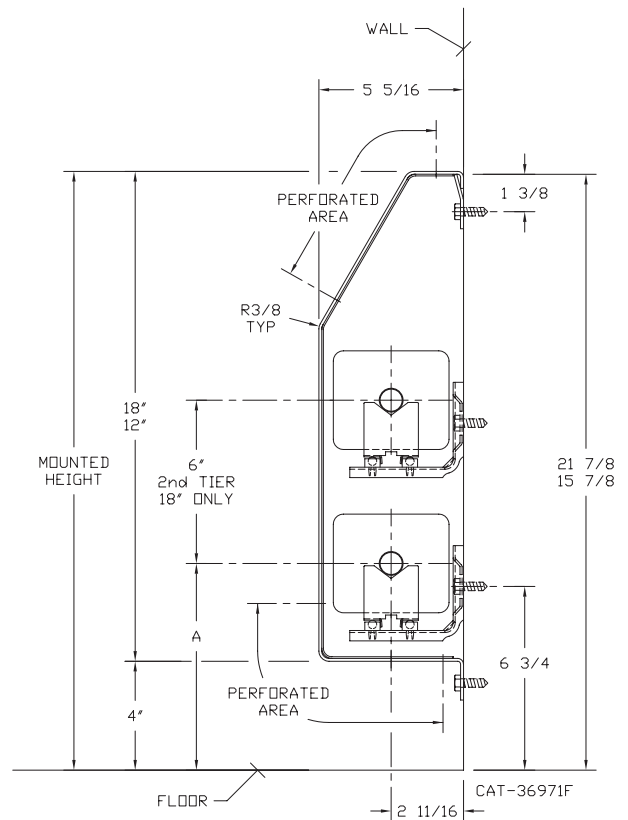
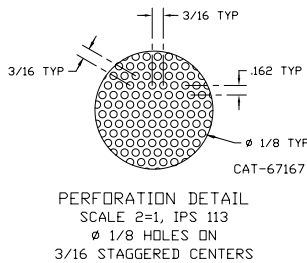
**BACKPLATE:**

- TYPE:  Partial Backplate
- LENGTHS: 8' Only
- MATERIAL:  14 Ga. Painted Std.  
 12 Ga. Opt'l.
- TYPE:  Full Backplate
- LENGTHS: 2' thru 8' in 6" Increments
- MATERIAL:  14 Ga. Painted Std.  
 12 Ga. Opt'l.

- BRACKETS:**  Wall Mtd B.B. Hanger

VGS-12P     VGS-18P

ELEMENT TUBE SIZE	FIN SIZE HEIGHT x WIDTH	CRADLE NUMBER	A
3/4 COPPER	3 5/8 x 4 1/4	2	7 9/16
3/4 COPPER	4 1/4 x 4 1/4	3A	7 15/16
1" COPPER	3 5/8 x 4 1/4	2	7 3/4
1" COPPER	4 1/4 x 4 1/4	2	7 3/4
1 1/4 COPPER	3 5/8 x 4 1/4	2	7 7/8
1 1/4 COPPER	4 1/4 x 4 1/4	2	7 7/8
1" STEEL	4 1/4 x 4 1/4	2	7 7/8
1 1/4 STEEL	4 1/4 x 4 1/4	2	8 1/16
2" STEEL	4 1/4 x 4 1/4	1	7 13/16



260 North Elm St., Westfield, MA 01085  
(413) 568-9591 Fax: (413) 564-5661  
www.vulcanrad.com



PROJECT: \_\_\_\_\_ DATE: \_\_\_\_\_  
 LOCATION: \_\_\_\_\_  
 ARCHITECT: \_\_\_\_\_  
 ENGINEER: \_\_\_\_\_  
 CONTRACTOR: \_\_\_\_\_  
 PO NUMBER: \_\_\_\_\_

